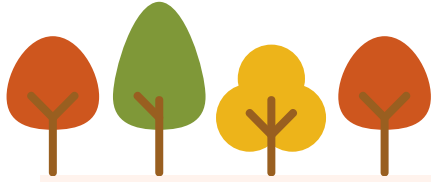
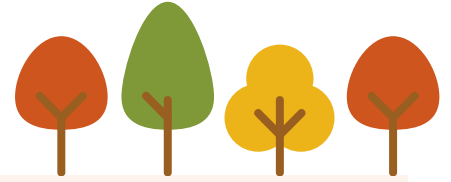


EVERYTHING AROUND ME IS



POETRY



OBSERVE

On your own or with your family: Sit outside or look out a window.
Observe. Draw or take notes.

Use the prompts: **I notice**, **I wonder**, and **it reminds me of**.

Ask yourself: What season am I in? How can I tell what season it is? What does the air feel like? What plants do I see? Are there flowers? Are birds singing? Am I wearing a t-shirt, sweatshirt, or maybe a jacket? What do I hear, see, feel, and smell?

WRITE

Use your notes to write a poem about what season it is.

EXAMPLE

Observations:

I notice the clouds are grey. A few leaves have turned yellow and some are brown on the ground. I wonder why the sky feels heavy and close and what causes the leaves to change color. It reminds me of playing in piles of leaves with my uncle. The air feels cool especially in the evenings. The days are still warm. I see pine trees, oaks, and maples. The soybeans are turning yellow in the field. I hear geese honking and leaves crunch underfoot. It smells sweet and earthy.

Poem:

*The clouds are grey, heavy, and close.
My feet rustle through brown leaves covering the path.
On the trees a few yellow leaves hang on, not ready for the fall.
I pause and take a breath. The air is sweet and earthy.
The sun is warm on my face. Then a breeze shakes the leaves
In nearby trees; a few drift to the ground. I
feel the air cool on my skin.*

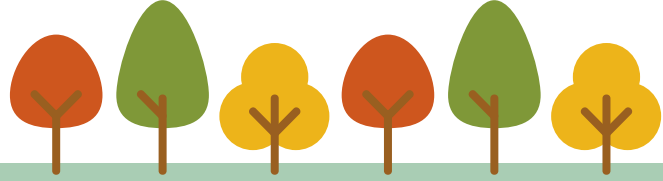


Share your poem with **#DiscoverEEonESVA**

NAME: _____



DATE: _____



**WHEN I LOOK AROUND,
I NOTICE... I WONDER... IT REMINDS ME OF...**

Large empty rectangular box for writing observations and reflections.

MY POEM

Large empty rectangular box for writing a poem.

Share your poem with #DiscoverEEonESVA

Color palette -

Gold - eebd6b

Turquoise - 199da4

Russet - a54811

Blue grey - 447695

